

# DZ04 PTZ Camera

## Quick Start Guide



The Eagle Eye DZ04 is a 5 Megapixel PTZ camera. This model is suitable for indoor and outdoor use for a wide range of applications. The cameras are pre-configured to securely operate with the Eagle Eye Cloud VMS and Eagle Eye CameraManager. Follow the instructions in this guide to correctly install the camera and add it to the Eagle Eye Cloud VMS.



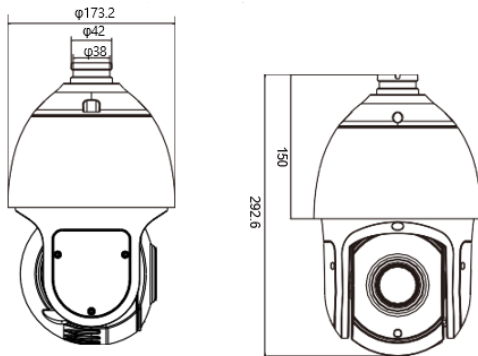
### 1 Check the Package Contents

Open the package and check the product for obvious damage. Confirm that all items in the packing list are included in the box.

#### PACKING LIST

- DZ04 Camera
- Mounting Accessories Package
- Card with QR link to this Quick Start Guide
- Installation Template Sticker

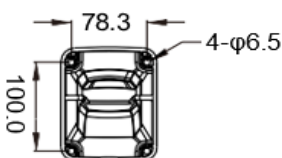
The DZ04 dimensions are below in millimeters.



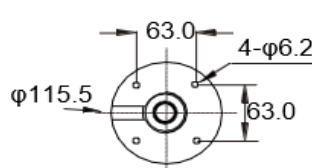
### 2 Prepare the Installation Site

Mark the installation site based on whether you are installing a ceiling or wall bracket. Drill four holes to 60 mm depth and drive the plastic anchors into the holes.

#### Wall Bracket



#### Ceiling Bracket

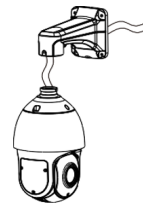


**Note:** If installing the camera outdoors, use weatherproof grommets (included in the accessory package).

### 3 Thread the Cables

Thread the cables through cable hole on the bracket.

#### Wall bracket

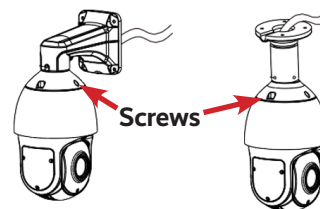


#### Ceiling bracket



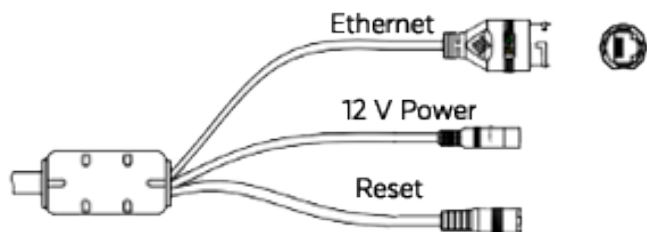
### 4 Attach the Camera to the Bracket

Attach the DZ04 camera to the bracket and tighten the screws.



## 5 Connect the Camera to a Power Supply

Attach an Ethernet cable to connect the camera to a network switch. If the switch does not provide power over Ethernet (PoE), attach 12V power to the 12V power connector.



## 6 Add the Camera to the Cloud VMS

We recommend using the Eagle Eye Viewer mobile application to add the camera to your Cloud VMS account.

To add the camera through the Eagle Eye Viewer app:

- Navigate to the **Dashboard** and click the plus icon in the top right.
- To add the camera to a bridge or CMVR:
  - Select **Add Camera**.
  - Choose the camera you just connected from the list of **Available Cameras**. Select the bridge or CMVR where you want to add the camera.
  - Name the camera and choose **Save**.
- To add the camera directly to the cloud:
  - Select **Add Direct to Cloud**.
  - Name the camera.
  - Scan the QR code on the camera label to add the camera by its MAC address.
  - Select **Add Camera**.

Alternately, you can add the camera using the Eagle Eye Cloud VMS web interface. To add the camera through the web interface:

- Go to the Eagle Eye Cloud VMS web interface and log in with your credentials.
- Go to the **Dashboard**.
- To add the camera to a bridge or CMVR:
  - Go the list of **Available Cameras**.
  - Click the green plus icon next to the camera you just connected from the list of **Available Cameras**.
  - If there are multiple bridges or CMVRs on the account, select the bridge or CMVR where you want to add the camera.
  - Name the camera and choose **Save**.
- To add the camera directly to the cloud:
  - Select the ellipsis icon <...> and choose **Add Camera Direct** from the drop-down menu.
  - In the **Add Camera Direct** dialog, name the camera and enter its MAC address.

**Note:** The camera is initially shown as offline on the dashboard. After two minutes, it should appear online (denoted by a green check mark).

## 7 Adjust the Viewing Angle

- Go to **Layouts** in the Eagle Eye Viewer and locate the camera you just added.
- Use the **Preview** tile to check the camera's viewing angle as you adjust the lens manually.
- Adjust the camera's viewing angle by rotating the camera three ways: horizontally, vertically, and axially. The camera can rotate horizontally 0–45°. The outer sphere can rotate vertically 0–72°. The inner lens can rotate axially 360°.

### LEARN MORE

For more information about Eagle Eye Cameras, visit

[www.een.com/hardware/security-cameras/](http://www.een.com/hardware/security-cameras/)